

# Sabula Tech

## 2020 New Mold Portfolio

These are potential new molds Sabula Tech may start running in 2020

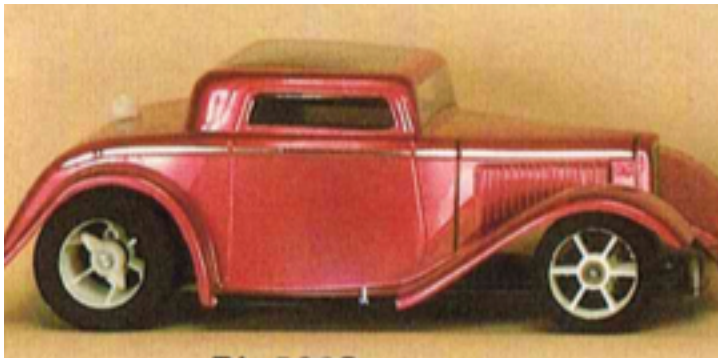
RW= Rear Width  
FW= Front Width  
WB= Wheelbase  
LG= Length

All measurements are in approximate inches.

Most pavement oval racing bodies are pretty flexible for wheelbase. Measurement for those can be adjusted some since they do not have wheel well lines in most of them.

Many other bodies also have a wheelbase that is forgiving because there is no marked wheel wells.

[http://oldrc.com/BolinkFiles/  
NewMolds2020.pdf](http://oldrc.com/BolinkFiles/NewMolds2020.pdf)



2003 1/12 32 Street Rod  
RW 6-3/4, FW 6-5/8, WB 7-5/8, LG 11-1/4



2005 86 Brisk  
RW 6-7/8, FW 6-7/8, WB 7 3/4+, LG 14 1/2



2009 34 Hot Rod  
RW 6-1/8, FW NA, WB 7-3/4+, LG 11-1/8



2013 88 Pointer  
RW 6-3/4, FW 6-5/8, WB 7-3/4+,  
LG 14-1/4



2014 Turismo  
RW 6-7/8, FW 6-5/8, WB 7-3/4+,  
LG 13-5/8



2015 Air 1/12  
RW 6-7/8, FW 6-5/8, WB 7-5/8+, LG 14-5/8



2016 Oval 89 Raven SC  
RW 6-5/8, FW 6-3/4, WB 7-5/8+, LG 14



2017 Oval 90 Lime  
RW 7, FW 6-5/8, WB 7-5/8+, LG 13-7/8



2020 962 Torche Short  
RW 6-3/4, FW 6-5/8, WB 7-1/2+, LG 12-7/8



2023 92 Pointer  
RW 6-7/8, FW 6-3/4, WB 7-3/4+,  
LG 14-1/8



2024 Heavy GTR  
RW 6-5/8, FW 6-3/4, WB 7-1/2+,  
LG 13-1/2



2029 Turismo WSC  
RW 6-3/4, FW 6-1/2, WB 7-3/4, LG 13

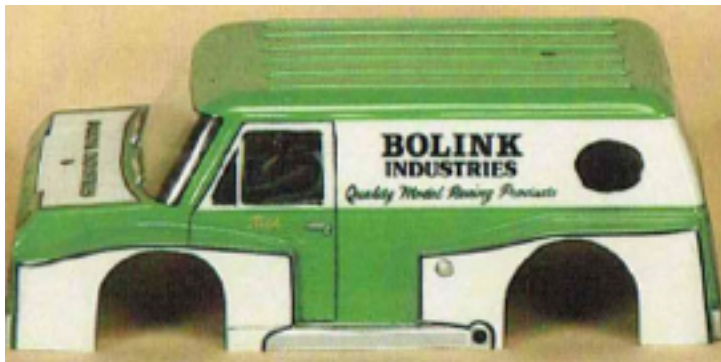




2033 Truk-R  
RW 7, FW 6-3/8, WB 7-3/4, LG 12-3/4



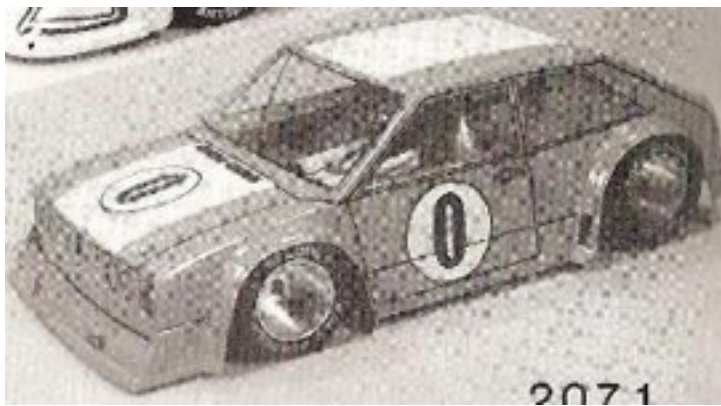
2034 99 Dome  
RW 7-3/8, FW 7-3/8, WB 8-1/8, LG 14-3/8



2059 Shag  
RW 6-7/8, FW 6-7/8, WB 7-1/2, LG 13



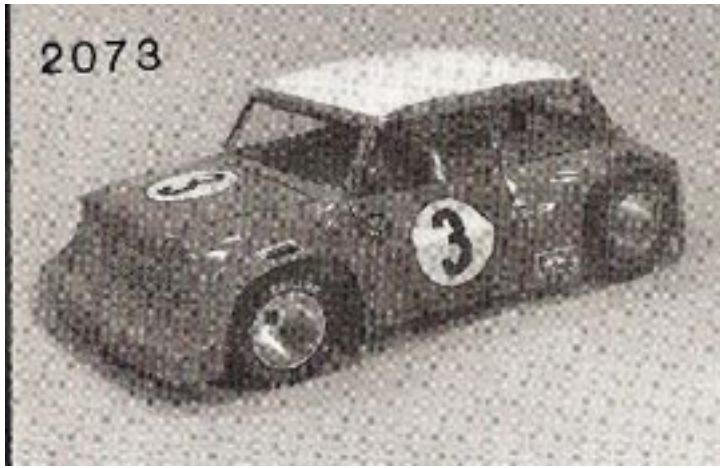
2067 Lima Truck  
RW 6-7/8, FW 6-7/8, WB 7-1/2, LG 13-7/8



2071 SCIROCC  
RW 7, FW 6-3/4, WB 7-5/8 LG 12-1/2



2072 Inferno  
RW 6-3/4, FW 6-3/4, WB 7-5/8, LG 13-1/2



2073

2073 Brit  
RW 6-3/4, FW 6-3/4, WB 7-1/2, LG 12



2075 Torches 917-K  
RW 6-7/8, FW 6-7/8, WB 7-1/2+, LG 13



2078

2078 Bass 900 Turbo  
RW 6-5/8, FW 6-5/8, WB 7-3/4, LG 14-5/8



2076 Oval Oiler  
RW 6-7/8, FW 6-7/8, WB 7-3/4, LG 13-1/4



BL-2083

2083 Dune Buggy  
RW 6-3/4, FW 6-1/2, WB 7-3/4, LG 11-1/4



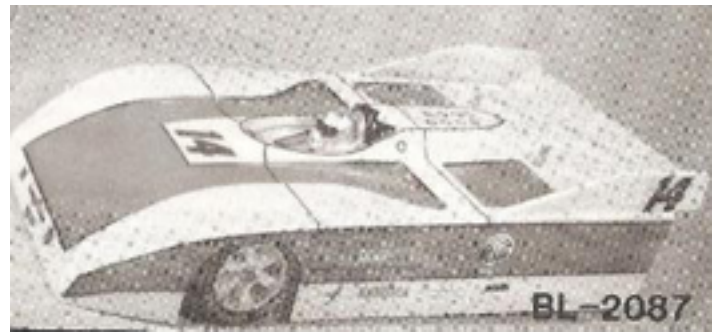
BL-2

2084 CSI Germany  
RW 6-7/8, FW 7, WB 7-3/4, LG 13-3/8

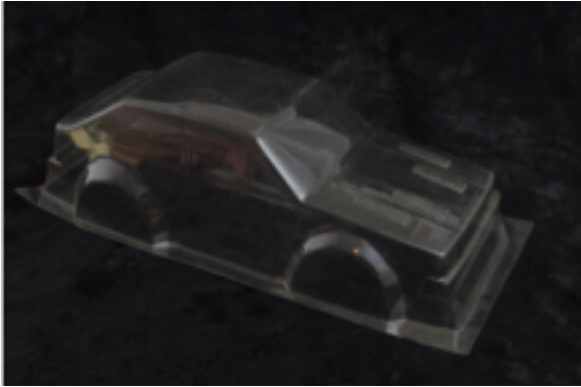




2085 Frenchie  
RW 6-5/8, FW 6-3/4, WB 7-3/4, LG 12



2087 CAC-1  
RW 6-5/8, FW 6-5/8, WB 7-1/2+, LG 13-1/2



2091 Swede 343  
RW 6-7/8, FW 6-5/8, WB 8, LG 14-7/8



2092 Chaparral 2K  
WIDE 6-1/2, WB 8, LG 14-3/8



2096 Oval Raven  
RW 7, FW 7, WB 7-3/4, LG 14-1/2



2097 83 Marrow  
RW 6-7/8, FW 6-3/4, WB 7-5/8, LG 14-3/8



2099 Arundel C-200  
RW 6-7/8, FW 6-3/4, WB 6-3/4+ LG 12-5/8



2101 96 Monty  
RW 7-3/8, FW 7-3/8, WB 9-3/4, LG 16-3/4



2106 99 Dome  
RW 7-3/8, FW 7-1/4, WB 10, LG 15-3/8



2107 Strato Cruiser  
RW 7-5/8, FW 7-5/8, WB 10, LG 17-1/4



2109 Constant (Partially broke)



2111 99 Strato Cruiser 200mm  
RW 8, FW 8-1/8, WB 9-7/8, LG 17



2114 Nesbitt  
RW 7-5/8, FW 7-5/8, WB 10, LG 16-1/2



2115 Curve  
RW 7-5/8, FW 7-1/2, WB 10-11, LG 16-1/2



2221 2001 Rigid  
RW 7-1/4, FW 7-1/4, WB 10-1/4, LG 17-1/2



2233 Rodeo (Nitro Rustler)  
RW 6-1/8 FW 6-7/8, WB 10-1/2, LG 15-3/4



2234 Wrestler (Nitro Rustler)  
RW 6-3/4, FW 5-3/4, WB 10-5/8, LG 16-3/8



2236 Flag (RC10 GT)  
RW



2280 Calibrate 190mm  
RW 7-5/8, FW 7-5/8, WB 10-1/8, LG 17-3/4



2251 Reload Truck (stampede)  
RW 6-1/2, FW 6-1/4, WB 9-7/8, LG 16





2255 Compact Pick-Up  
RW 8-1/4, FW 8, WB 10, LG 17-3/8



2256 98 Bull  
RW 8-3/8, FW 8, WB 10-1/4, LG 18-1/2



2256-W 98 Bull  
RW 9-1/8, FW 8-7/8, WB 10-1/4, LG 18-3/4



2268 R + S MK III  
RW 9-3/8, FW 9, WB 9-7/8, LG 17-3/4



2271 96 Raven  
RW 8-18, FW 8, WB 10-1/4, LG 18-3/4



2271-W 96 Raven Wide  
RW 9-1/8, FW 8-7/8, WB 10-1/4, LG 18-1/2



2274 96 Monty  
RW 8-3/8, FW 8, WB 10-1/4, LG 18-1/2



2275 97 Pointer  
RW 8-3/8, FW 8, WB 10-1/4, LG 18-1/2



2275-W 97 Pointer Wide  
RW 9-1/8, FW 8-7/8, WB 10-1/4, LG 18-3/4



2276 Short Track Monty  
RW 8-1/4, FW 8-1/4, WB 10-1/4, LG 18-5/8



2282 95 Pointer  
RW 8-3/8, FW 8-1/4, WB 10-1/4, LG

2283 95 Fjorde  
RW 8-1/4, FW 8-1/8, WB 9-1/8+, LG 18-3/4



2284 95 Chipotle  
RW 8-3/8, FW 8-1/8, WB 10-1/8, LG 17-7/8

2285 95 Monty  
RW 8-1/8, FW 8, WB 10-1/4, LG 19



2292 Raven Short Track (damaged)  
RW 8-3/8, FW 8, WB 10-1/4, LG 18-3/8



2293 Short Track Raven  
RW 9, FW 8-3/4, WB 10-1/4, LG 18-1/8





2297 94 Marrow  
RW 8-1/2, FW 8-1/8, WB 10-1/4+, LG 18-5/8



2300 93 Lime  
RW 8-3/8, FW 8, WB 10-1/4, LG 18-3/8



2301 93 Pointer  
RW 8-1/8, FW 8, WB 10-1/4, LG 18-1/2



2302 93 Raven  
RW 8-3/8, FW 8, WB 10-1/4, LG 18-1/2



2303 93 Raven Narrow  
RW 8-1/8, FW 8, WB 10-1/4, LG 18-1/2



2305 Narrow Short Track Lime  
RW 8-1/4, FW 8, WB 10-1/4, LG 18





2306 Short Track Lime  
RW 9, FW 9, WB 10-1/4,



2309 89 Leader  
RW 8-1/4, FW 8, WB 10-1/4, LG 18



2310 92 Pointer  
RW 9-1/8, FW 8-7/8, WB 10-1/8, LG 18-5/8



2311 92 Pointer  
RW 8, FW 7-7/8, WB 10-1/4, LG 18-5/8



2317 Chipotle Stadium Truck  
RW 6-3/4, FW 6-1/8, WB 9-7/8, LG 16-3/8



2318 92 Oiler Narrow  
RW 8-1/8, FW 8, WB 10-1/4, LG 18-1/8



2319 92 Oiler  
RW 9, FW 8-7/8, WB 10-1/4, LG 18-1/8



2320 92 Brisk Narrow  
RW 8-1/2, FW 7-7/8, WB 10-1/4, LG 18-1/4



2321 92 Brisk  
RW 9, FW 8-7/8, WB 10-1/4, LG 18-3/8



2322 92 Lime Narrow  
RW 8-1/8, FW 8, WB 10-1/4, LG 18-3/8



2323 92 Lime  
RW 9, FW 8-7/8, WB 10-1/4, LG 18-1/2



2324 91 Raven  
RW 8, FW 7-7/8, WB 10-1/8, LG 18-3/4





2325 91 Raven  
RW 9, FW 8-7/8, WB 10-1/4, LG 18-7/8



2329 90 Pointer Narrow  
RW 8-1/8, FW 7-7/8, WB 10-1/2, LG 18-7/8



2330 Berserk Narrow  
RW 8, FW 7-7/8, WB 10-1/8, LG 18-1/4



2331 Berserk  
RW 9-1/4, FW 8-3/4, WB 10-1/4, LG 18-1/2

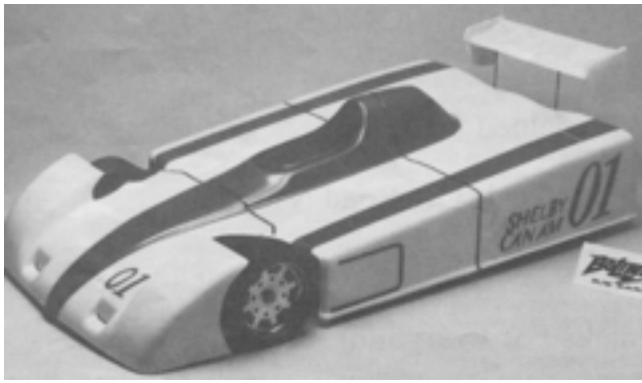


2334 Danger  
RW 7-7/8, FW 7-7/8, WB 9-7/8, LG 16-1/2



2335 Florida IROC  
RW 9, FW 8-7/8, WB 10-1/4, LG 18-1/8





2336 Aurora Can-Am  
RW 9-1/4, FW 9, WB 8-3/4, LG 16-3/4



2339 90 Pointer  
RW 9, FW 8-7/8, WB 10-1/4, LG 18-3/4



2348 89 Leader  
RW 9, FW 8-3/4, WB 10-1/4, LG 18-1/8



2356 89 Raven SC  
RW 8-7/8, FW 8-7/8, WB 10-1/4, LG 18-1/2



2358 Air 1/10  
RW 9-1/2, FW 9-1/4, WB 9-3/8, LG 18-5/8



2360 88 Raven  
RW 9, FW 9, WB 10-1/4, LG 18-3/4



BL 2363

2363 88 Pointer  
RW 9, FW 9, WB 10-1/4, LG 18



BL 2364

2364 Turismo  
RW 9-1/8, FW 9-1/8, WB 10-1/8, LG 18-5/8



BL 2365

2365 Arundel  
RW 9-7/8, FW 9-1/2, 9-3/8, LG 17-1/2



BL 2370

2370 Fire  
RW 9-3/4, FW 9-3/8, WB 9-1/2+ LG 17-3/4



BL 2372

2372 87 Raven  
RW 9-1/4, FW 9-1/8, WB 10-1/4, LG 19-1/8



BL 2375

2375 86 Brisk  
RW 9-1/8, FW 9, WB 10-1/4, LG 19



BL 2376

2376 TOJ  
RW 9-5/8, FW 9-1/2, WB 8-3/4+, LG 18



BL 2377

2377 SCHKEE 1/10  
RW 9-5/8, FW 9-1/2, WB 8-1/4, LG 17-1/2





BL 2389

2389 Raven  
RW 9, FW 8-3/4, WB 10-1/8, LG 18-1/2



2391 Slander Modified (DIRT OVAL)



BL 2393

2393 Sun King Cab  
RW 7-1/4, FW 7-1/4, WB 10, LG 16-1/4



STB020 Hubbel (Rustler)  
RW 6-7/8, FW 6-1/8, WB 9-5/8, LG 16



STB021 Bard (Stampede)  
RW 6-3/4, FW 6-1/4, WB 9-5/8, LG 16-1/4



STB022 Velour  
RW 6-3/4, FW 6-3/4, WB 7-5/8, LG 12-1/2





STB023 Parallax  
RW 6-1/2, FW 6-3/8, WG 7-3/4+, LG 13-1/2



STB024 Sick Burn  
RW 6-1/8, FW NA, WB Apx 8-1/4, LG 12-7/8



2520 Display Chassis (1/12)